



38 KRISHNA

Project Location: Hyderabad, Telangana, India
 Client Name: Mr. Ravi Vuppala
 Plot Size: 111 ft. x 65 ft.
 Built up Area: 1236 sq. m.

Photography Courtesy: Ricken Desai



FAISAL VOHRA



SHAMILA MEERAN

OVERVIEW

With changing times comes changing lifestyles and changing demands on spaces. 38 Krishna is one such residential property that needed to be transformed to cater to an affluent couple in the city of Hyderabad, living with their two young sons. 38 Krishna is a modern home in its true sense, its clean simple lines and uncomplicated design defines the space, which is elegant, uncluttered and is a visual delight. The free movement through the various living spaces heightens the sense of openness and grandeur. Cut-outs, placed strategically in the slabs on each floor in the Living area creates a lung-space which beautifully connects the entire 3-storeyed, 11,000 s.ft. house together. The functional requirements for the family of four specified four ensuite Bedrooms, Living room, Family room, Dining room, Kitchen and Entertainment spaces such as a Home-theatre, Library and Terrace community spaces. In addition to meeting the requirements, lush green balconies, a double-height courtyard space and outdoor seating on all floors was also added. Each individual space was designed with a contemporary fusion-style aesthetic with bespoke furniture and metal-work details. The weaving of the beautifully landscaped outdoor spaces with the interiors by introducing large openings and extended living spaces presents equilibrium between modern living and a connection with nature.

F+S Designs

F+S DESIGNS
 ARCHITECTURE • INTERIORS

Design Firm: F+S Designs
 Location: Hyderabad, Telangana, India
 Website: www.fpluss.in
 Designer Incharge: Faisal Vohra & Shamila Meeran
 Design Team: Faisal Vohra, Shamila Meeran, Shrushti Gadepalli, Abdul Jaleel, Mohammed Yasser & Huzefa Malik
 Other Consultants: Landscape Architects: The Pinewood Studio, Landscape Contractor: Gamlaa, Lighting: Unique Lighting Systems & Home Automation: Awicon Technologies

Company Profile

F+S Designs is an award-winning design firm founded by Faisal Vohra and Shamila Meeran and based out of Hyderabad, Telangana. The firm has a contemporary and minimalist approach to their design, and their Architectural and Interior portfolio of work currently ranges across Luxury Residential, Corporate Offices, Hospitality and Retail spaces across various cities in India. At the core of what they strive to do, is a belief that great design is a catalyst in enhancing the interactive experience of people with their surroundings. This drives them to constantly look for newer means and materials to provide the very best in design with a keen understanding of the cultures and communities they serve.



A minimalistic and practical design approach enabled the architects to hero the inherent quality and depth of materials through various planes and surfaces, bringing clarity and richness to the house.



NORTH EAST ELEVATION

ELEVATION DETAIL





The family room has a plush vibe with a beautiful stone backdrop, ambient lighting and a gorgeous custom art work on the wall.



Two streaks of 40-ft long linear lights running across the Living, Dining and Library areas not just visually connects the spaces but also creates a statement.



The hanging boats act as refreshing indoor chandeliers and add an element of quirk to the spaces.

The Pooja room door was left untouched since it's a beautifully carved traditional- pure Burma teak door and holds a sentimental value to the family.

To create the requisite warmth, lighting throughout the house is effected in warm 3,800K light, featuring a combination of ambient, linear light, spot lights, wall-washers and pendants as per requirement of the design and space.





Rugged tones of textured cement walls, with raw wood and leather finishes creates a contrasting Bedroom space for one of the sons.



Warm brown tones of wood panelling, beige brown walls, a sleek white sofa and clean linear lights encompass the other son's bedroom.



The double-height Courtyard is a memorable composition of 3 tall windows that accentuate the height of the space, with earthy patterned flooring and modern rustic furniture.

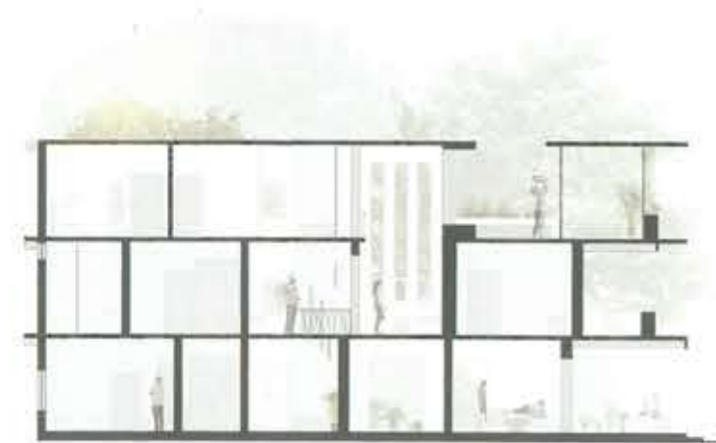


A plush wood-panelled back wall creates the backdrop for the Master Bedroom composed along with rich textures of Rose-gold metal and a sea-blue fabric headboard.

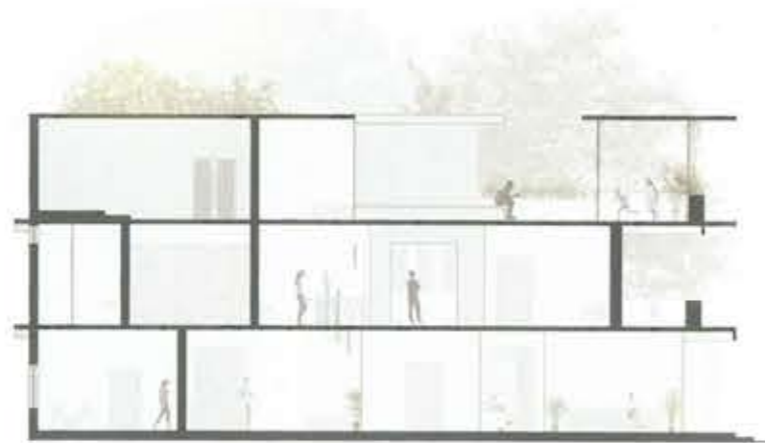




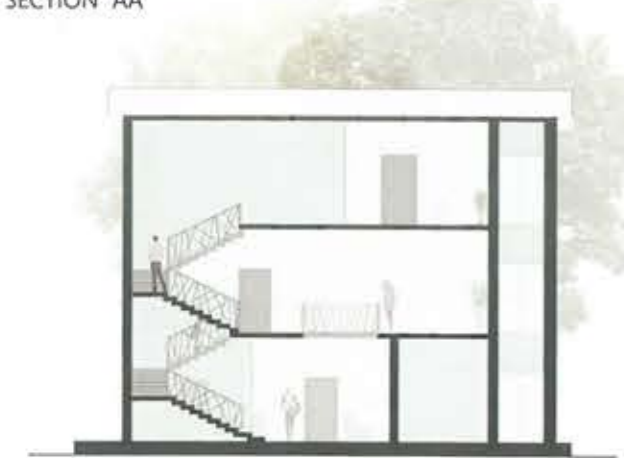
The terrace designed by The Pinewood Studio is a space designed to not only relax but also host get-togethers, parties and family meetings.



SECTION AA



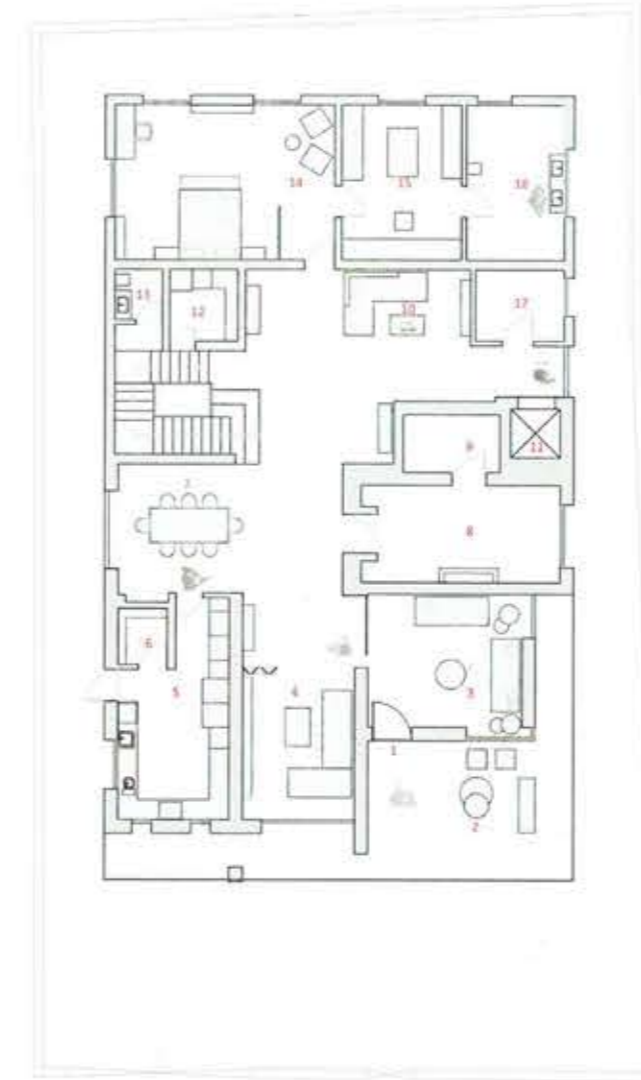
SECTION BB



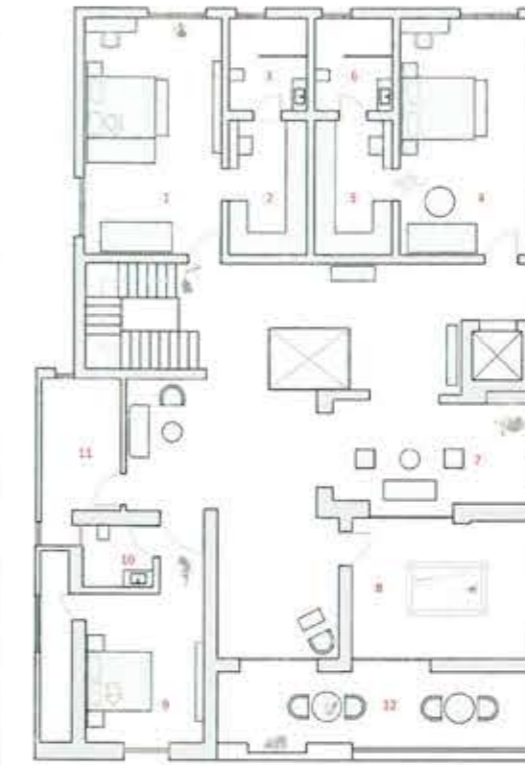
SECTION CC



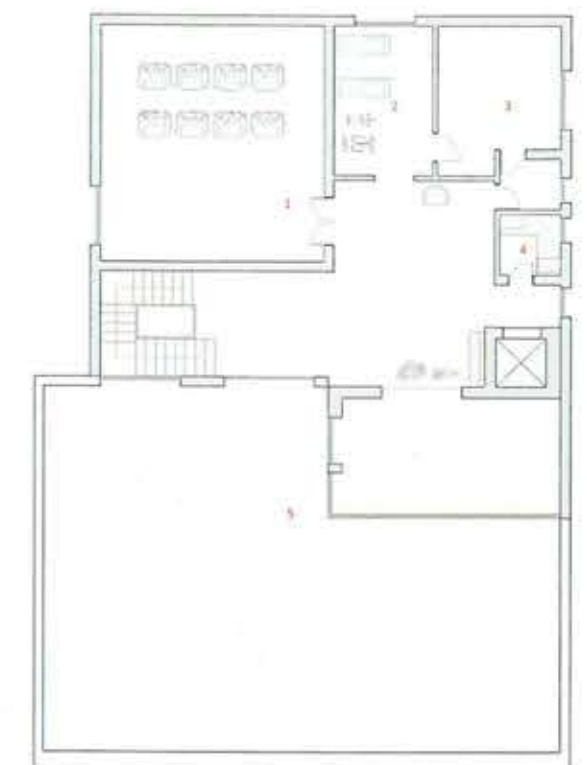
SECTIONAL DETAILS



GROUND FLOOR PLAN



FIRST FLOOR PLAN



SECOND FLOOR PLAN

MATERIALS

Flooring: Italian Botticino
 Wall Cladding: California Grey (Stone Life)
 Accessories & Interior Fixtures: Stone Life, Address Home, Room Therapy
 Light Fixtures: Unique Lighting Systems, Prakash Lights
 Kitchen/Wardrobe: Arttidnox Kitchens, Siemens
 Bath Fixtures/Sanitaryware: Hans Grohe
 Furniture/Decor: Magari, Gulmohar Lane, Wooden it be Nice, H. The Farm Boutique, Chairs & Co., Jaipur Rug, Momahi, Good Earth, Nicobar
 Others: Home Automation: Awicon Technologies

LEGEND

GROUND FLOOR

1. ENTRANCE
2. PORCH
3. LIVING AREA
4. FAMILY LOUNGE
5. KITCHEN
6. STORE-1
7. DINING AREA
8. POOJA ROOM
9. SAFE
10. LIBRARY
11. LIFT
12. LAUNDRY
13. POWDER ROOM

14. MASTER BEDROOM-1
15. WALK-IN CLOSET
16. MASTER BEDROOM-2
17. STORE-2

FIRST FLOOR

1. BEDROOM-1
2. WALK-IN CLOSET
3. BATHROOM-1
4. BEDROOM-2
5. WALK-IN CLOSET
6. BATHROOM-2
7. DOUBLE HT. COURTYARD
8. GAMING ROOM
9. GUEST ROOM
10. BATHROOM-3
11. ELECTRICAL ROOM
12. BALCONY

SECOND FLOOR

1. HOME THEATRE
2. GYM
3. STORE ROOM
4. KITCHEN
5. TERRACE